



## KINGSWOOD ROAD

TADWORTH

[www.michael-everett.co.uk](http://www.michael-everett.co.uk)

# 14 KINGSWOOD ROAD

TADWORTH KT20 5EG



4 RECEPTION ROOMS



KITCHEN DINER



3 BEDROOMS



BATHROOMS & CLOAKROOM

APROX. 1648 FT<sup>2</sup> | 153.13 M<sup>2</sup>

An attractive art-deco style semi detached house requiring modernisation located in a popular road and offered for sale with no onward chain.

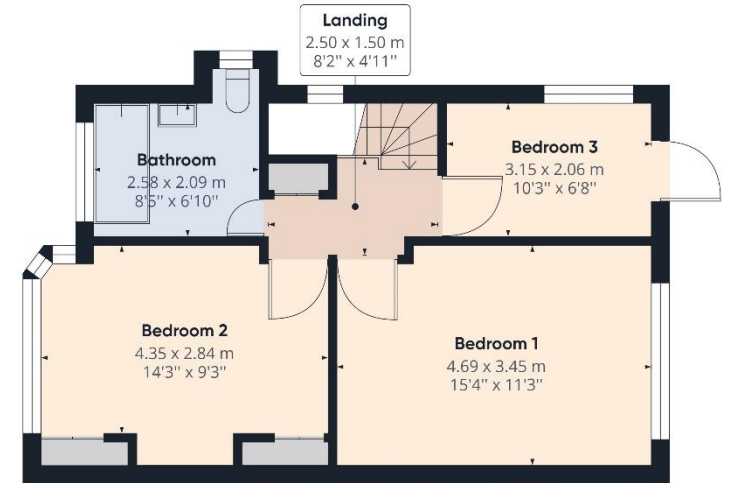
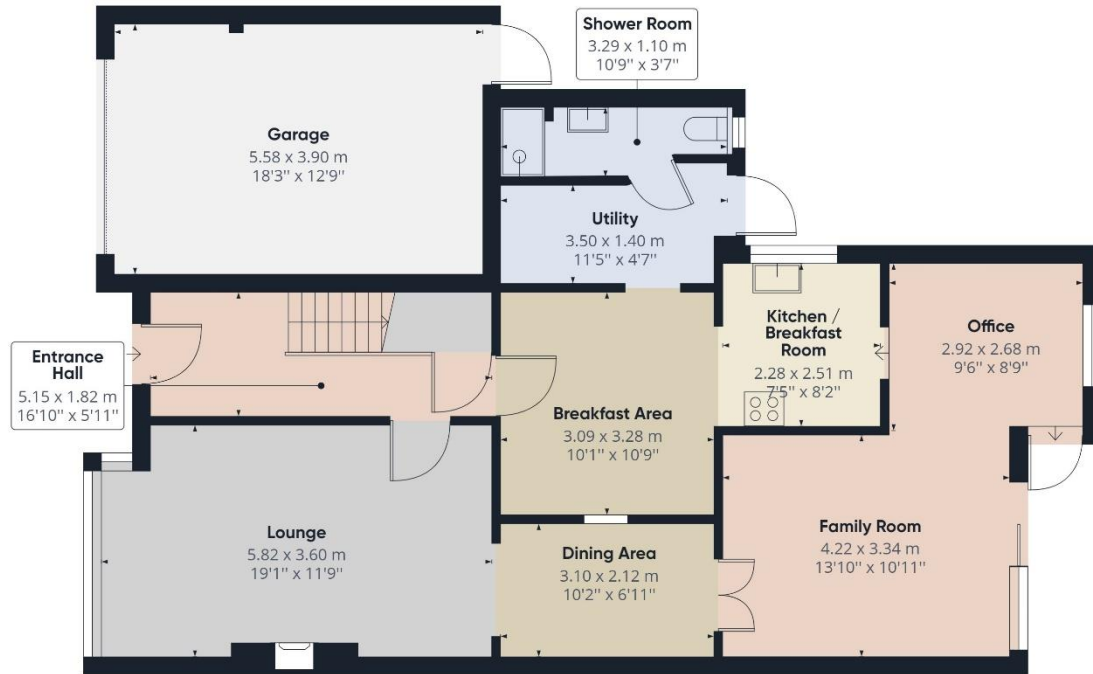
The property features extended ground floor accommodation including a lounge with a semi circular bay window and fireplace, a wood panelled dining area, family room, study and a kitchen breakfast room and utility room with cloakroom. On the first floor there are three bedrooms, two doubles and a single, and a bathroom.

Outside, the house sits well back from the road with a long block paved driveway and a small lawn to the front and a single garage and side access to a good size rear garden.

The village is only a couple of minutes' walk away offering a range of shops and services and station with routes to London Bridge and Victoria and the beautiful open spaces of Epsom downs and Walton Heath.

OFFERS IN EXCESS OF: **£700,000**







**WALTON ON THE HILL** 61 Walton Street, Walton-on-the-Hill, Surrey KT20 7RZ  
**01737 814877**



**IMPORTANT** We would inform prospective purchasers that these sales particulars have been prepared as a general guide only. A detailed survey has not been carried out, nor the services, appliances and fittings tested. Room sizes should not be relied upon for furnishing purposes and are approximate. If floor plans are included, they are for guidance only and illustration purposes only and may not be to scale. If there are any important matters likely to affect your decision to buy, please contact us before viewing the property.

michael-everett.co.uk